

## Music Staff

Music Coordinator	Mary Romskog
Organist	Judy Knoernschild
All Saints Choir Director	Mark Bailey
All Saints Choir Accompanist	Judy Knoernschild
All Saints Praise Director	Tom Weis
Brass Ensemble Coordinator	Mary Romskog
Children's Choir Director	Judy Knoernschild
Children's Choir Accompanist	Anna Romskog
Ensemble Director	Marc Raduenz
Flute Choir Coordinator	Mary Romskog
Genesis Bells Director	Mary Romskog
Hand Bell Choir Director	Jean Voelkel

**All Saints Lutheran Church  
705 W. Tomlin Road  
Wales, WI 53183  
262-968-3322  
[www.aslcwales.org](http://www.aslcwales.org)**

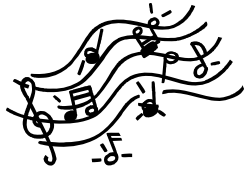
**All Saints Lutheran Church  
705 W. Tomlin Road  
Wales, WI 53183**

All Saints  
Lutheran Church

# Music Program



[aslcwales.org](http://aslcwales.org)



# *My life flows on in endless song . . .*

## **Genesis Bell Choir**

- Rehearses on Wednesdays from September through May from 5:00 to 6:00 p.m.
- No experience needed! Open to all beginners grade 4 through adults.
- Participates in services on the third Sunday of each month and in special celebrations.
- Contact: Mary Romskog 436-9543

## **Children's Choir**

- Rehearses on Wednesdays from September through May from 6:15 to 6:45 p.m.
- Open to preschool through fourth grade.
- Participates in services on the second Sunday of each month and in special celebrations.
- Contact: Judy Knoernschild 392-2584

## **All Saints Choir**

- Rehearses on Wednesdays from September through May from 7:00 to 8:00 p.m.
- Open to all adults and high school youth.
- Music includes a variety of traditional and contemporary worship music.
- Leads the *Evangelical Lutheran Worship Setting 8* liturgy on the fourth Sunday of each month and participates in special celebrations.
- Contact Mark Bailey 392-2632

## **Hand Bell Choir**

- Rehearses each Wednesday from September through May from 6:00 to 7:00 p.m.
- Ringers should be able to read either treble or bass clef and be willing to learn the other clef and switch parts as needed.
- Participates in services on the third Sunday of each month and in special celebrations.
- Contact: Jean Voelkel 363-7177

## **Ensemble**

- Rehearses once a month from September through May on the Thursday evening preceding the first Sunday of the month from 7:00 to 8:30 p.m.
- Composed of eight adult singers plus adult and youth instrumentalists.
- Participants must be able to read music as well as sing and play independently.
- Leads the *Now the Feast and Celebration* liturgy on the first Sunday of each month and participates in special celebrations.
- Contact: Mary Romskog 436-9543

## **Brass Ensemble**

- Open to all brass players of high school age or older.
- Participates in services on Reformation and Easter Sunday.
- Contact: Mary Romskog 436-9543

## **All Saints Praise**

- Rehearses once a month from September through May on the Wednesday evening preceding the second Sunday of the month from 8:00 to 9:00 p.m.
- Open to all adult singers and instrumentalists. Instrumentalists should be able to read music and play independently. Instrumental needs are determined by the group.
- Leads the *Evangelical Lutheran Worship Setting 8* liturgy on the second Sunday each month and participates in special celebrations.
- Contact: Tom Weis 646-7783

## **Flute Choir**

- Open to all flutists of high school age or older.
- Rehearses periodically as time permits.
- Participates in services occasionally.
- Contact: Mary Romskog 436-9543

## **Special Music**

Everyone is encouraged to provide special prelude or offertory music during the summer months and prelude music during the fall, winter and spring. No skill level is required, only a desire to enhance the worship experience.

Contact: Mary Romskog 436-9543

